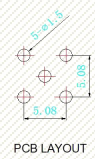
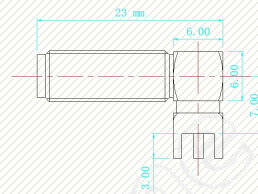


产 品/Product : **SMA-K Bended Q4 ,L23, DIP RF Connector**

料 号/PN : **AHCG.202B**

应 用/Application : **All RF transmit /receiver communication system ; ~6GHz**



电气参数 (Electrical Properties)

频率/Frequency:	DC~6000 MHz
输入阻抗/Impedance:	50 Ω
驻波比/VSWR:	≤ 1.4
插入损耗/Insertion Loss:	0.35 dB
极化方式/Polarization:	/

机械参数 (Mechanical Properties)

接头&线缆/Conn&Cable:	SMA-K
材料&颜色/Material&Color:	Copper
安装方式/Mounting:	DIP
尺寸/Size:	Q6 x L23 mm
重量/Weight:	3.0 g/pcs
工作温度/Operate Temp:	-40 ~ +85 $^{\circ}\text{C}$

关联产品/Relation Product



SMA-K Q4 DIP ([AHCG.201](#))



SMA-K ASSY ([AHCG.101](#))



SMA/B-IPX ([AHCG.102](#))



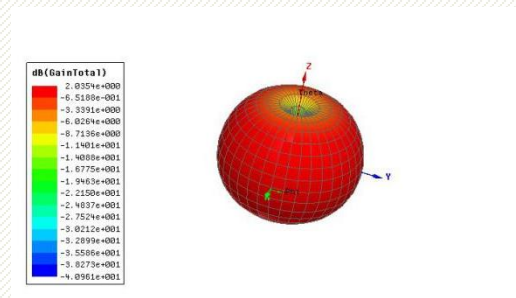
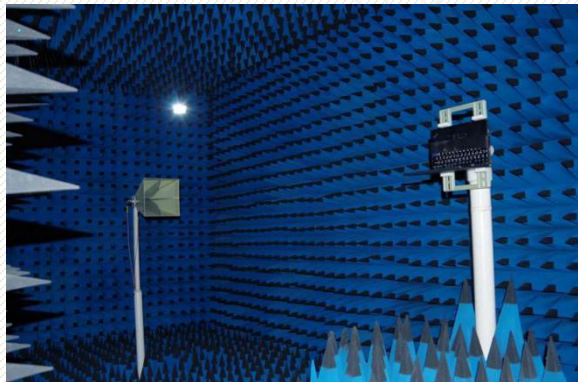
IPX G1 ([AHCG.204](#))

产品手册/ Product Catalogue



下载地址/Download Link: <http://docs.AntennaHome.com/ant/catalogue.pdf>

免费样品申请
Ask free sample



Online Support

Contact Us

E-mail : CS@AntennaHome.com

Website : [Http://www.AntennaHome.com](http://www.AntennaHome.com)